

# Roscommon Arts Festival



709 Lake Street  
P.O. Box 486  
Roscommon, MI 48653  
Phone: (989) 275-8760  
Fax: (989) 275-2029  
[www.hlrcc.com](http://www.hlrcc.com)  
E-mail: [info@hlrcc.com](mailto:info@hlrcc.com)

## The 47<sup>th</sup> Annual Roscommon Arts Festival

Saturday, July 9, 2016

CRAF Center (606 Lake Street), Roscommon, MI

Exhibit Hours 9:00 a.m. – 4:00 p.m.

### Set Up Hours

Friday, July 8

5:00 - 7:00 p.m. (NO Lake Street Set-up available)

Saturday, July 9

7:00 - 8:30 a.m.

---

*Pre-register NOW! Call the Chamber one week prior to the festival and we will give you your assignment. (If you are on Lake Street you will NOT be able to set up until Saturday morning beginning at 7:00 a.m.) To unload, you will enter from the intersection of Fourth and Lake Streets. All vehicles must be off Lake Street by 8:30a.m.*

---

### Tear Down Hours

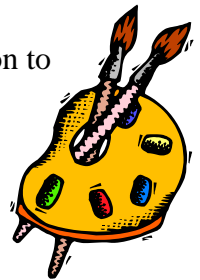
- NO TEAR DOWN OF BOOTHS BEFORE 4:00 p.m.
- NO vehicles in the Designated Exhibit area before 4:15 p.m.

### **You will receive confirmation of acceptance.**

All fine arts and crafters will be approved by a judging committee. It is necessary that you **include pictures** of you at work on your product as well as a description of all the products that you plan to exhibit. NO MANUFACTURED PRODUCTS will be in the show.

If you have colleagues in the fine arts or crafts area, we will be happy to forward an application to them. Please have them call (989) 275-8760 or email [info@hlrcc.com](mailto:info@hlrcc.com).

*We don't want to be the largest art show in the north. We just want to be the BEST art show in the north! Please help us to do just that in July 2016!*



Sincerely,  
Cathy Boyle  
Roscommon Arts Festival Committee  
(989) 275-8760  
[info@hlrcc.com](mailto:info@hlrcc.com)

**All vendors must bring tent weights – no stakes can go into the road!**